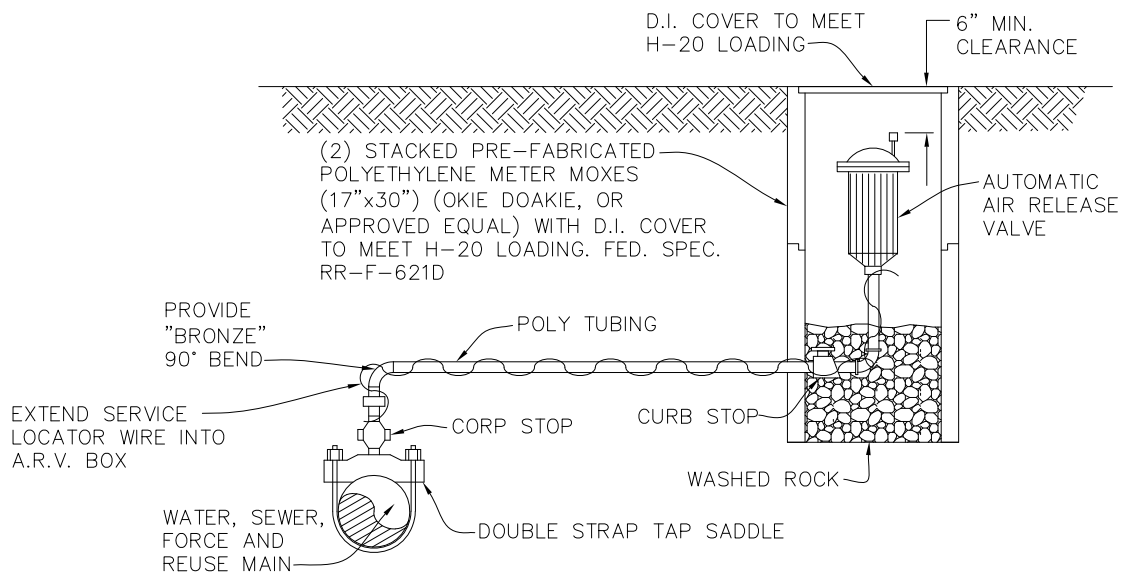


PLAN



SECTION

NOTE:

1. AIR RELEASE VALVE SHALL BE TYPE AND SIZE APPROPRIATE FOR SERVICE INTENDED.
2. POLYETHYLENE SHALL BE AS DEFINED BY A.S.T.M. D2737 SDR9 AND AWWA 901, LATEST EDITION, AND BE PRESSURE RATED FOR 200 PSI.
3. TUBING SHALL BE MARKED WITH SIZE, MANUFACTURER'S NAME, WORKING PRESSURE, NATIONAL SANITATION FOUNDATION APPROVAL, A.S.T.M. SPECIFICATION AND PRODUCTION CODE. TUBING SHALL HAVE AN OUTSIDE DIAMETER EQUIVALENT TO THE OUTER DIAMETER OF COPPER TUBING.
4. COMPRESSION FITTINGS SHALL BE SUITABLE FOR TUBING USED AND REQUIRE METAL (S.S.) INSERTS.
5. FOR MINIMUM PIPING AND AIR RELEASE VALVE SIZES, REFER TO M.C.U. APPROVED PRODUCT LIST. ENGINEER OF RECORD SHALL BE RESPONSIBLE FOR SIZING.
6. LOCATOR WIRE SHALL BE LAID IN THE TRENCH WITH ALL ARV'S CONNECTED TO THE MAIN WIRE AND WRAPPED AROUND THE ARV PIPING OR TUBING. WIRE FOR POTABLE WATER SHALL BE BLUE IN COLOR.

UNDERGROUND AIR RELEASE VALVE AND BOX

DSGN.	
DRW.	MES
CK.	ML



SOUTH MARTIN REGIONAL UTILITY (SMRU)

CONSTRUCTION STANDARDS AND DETAILS

DATE APPROVED
AUGUST 2016
DRAWING NUMBER

G 10