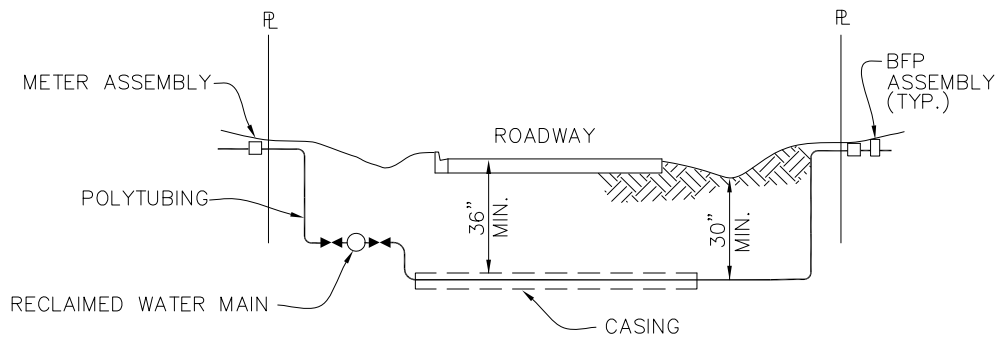


PLAN



PROFILE

NOTES:

1. HOUSE SERVICE LATERAL UNDER PAVEMENT SHALL BE INSTALLED THROUGH A 2" BLACK IRON PIPE OR PVC SCH. 80 CASING.
2. TAPPING SADDLE AND CORPORATION STOP MUST BE PLACED IN ACCESSIBLE AREAS, OUT FROM UNDER ANY PAVED AREAS.
3. RECLAIMED WATER SERVICE TO BE LOCATED ADJACENT TO SANITARY SERVICE LOCATIONS.

IQ RETAIL WATER SERVICE CONNECTION
PLAN /PROFILE (SINGLE OR DOUBLE)

DSGN.	 SOUTH MARTIN REGIONAL UTILITY (SMRU)	DATE APPROVED AUGUST 2016
DRW. MES		DRAWING NUMBER
CK. ML		CONSTRUCTION STANDARDS AND DETAILS