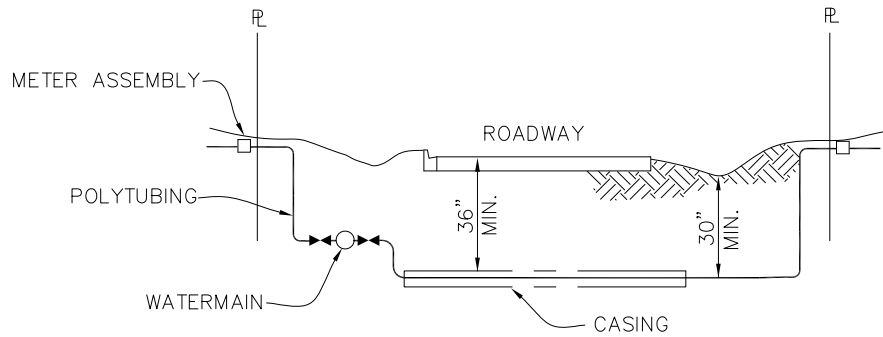


PLAN



PROFILE

NOTES:

1. HOUSE SERVICE LATERAL UNDER PAVEMENT SHALL BE INSTALLED THROUGH A 2" BLACK IRON PIPE OR PVC SCH. 80 CASING.
2. TAPPING SADDLE AND CORPORATION STOP MUST BE PLACED IN ACCESSABLE AREAS, OUT FROM UNDER ANY PAVED AREAS.
3. SERVICE LOCATOR WIRE SHALL BE LAID IN THE TRENCH WITH ALL SERVICES, CONNECTED TO THE MAIN WIRE AND WRAPPED AROUND THE SERVICE PIPING OR TUBING. WIRE FOR POTABLE WATER SHALL BE BLUE IN COLOR.
4. NEW SERVICES, 1" OR SMALLER. UNDER EXISTING PAVEMENT MAY BE INSTALLED BY PUSHING SERVICE LINE WITHOUT A CASING. SERVICES LARGER THAN 1' REQUIRE CASING UNDER EXISTING PAVEMENT.

WATER SERVICE CONNECTION (SINGLE OR DOUBLE)
PLAN / PROFILE

DSGN.	
DRW.	MES
CK.	ML



CONSTRUCTION STANDARDS AND DETAILS

DATE APPROVED	AUGUST 2016
DRAWING NUMBER	WS 05